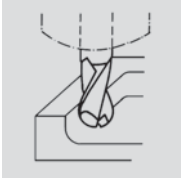


DIN 1835B $\lambda=25^\circ$ $\gamma=10^\circ$

HSSE PM **ALTiN** 510417

HSS Co8 510418 z=2



Použití / Usage / Applikation / Употребление

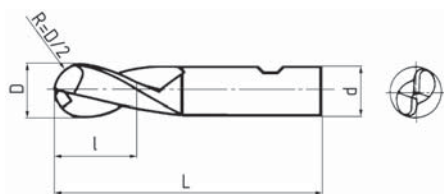
- HSSE-PM** ① ② ③ ④ ⑤ ⑥ ⑦ ⑧ ⑨ ⑩ ⑪ ⑫ ⑬
- HSS Co8** ① ② ③ ④ ⑤ ⑥ ⑦ ⑧ ⑨ ⑩ ⑪ ⑫ ⑬

HSSE PM **ALTiN**

HSS Co8

D h 10	l	L	d h 6	CODE	CODE
4	7	51	6	–	510418.040
5	8	52	6	–	510418.050
6	8	52	6	510417.060	510418.060
7	10	60	10	–	510418.070
8	11	61	10	510417.080	510418.080
9	11	61	10	–	510418.090
10	13	63	10	510417.100	510418.100
11	13	70	12	–	510418.110
12	16	73	12	510417.120	510418.120
13	16	73	12	–	510418.130
14	16	73	12	510417.140	510418.140
15	16	73	12	–	510418.150
16	19	79	16	510417.160	510418.160
18	19	79	16	510417.180	510418.180
20	22	88	20	510417.200	510418.200
22	22	88	20	–	510418.220
24	26	102	25	–	510418.240
25	26	102	25	–	510418.250
28	26	102	25	–	510418.280
30	26	102	25	–	510418.300
32	32	112	32	–	510418.320

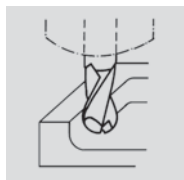
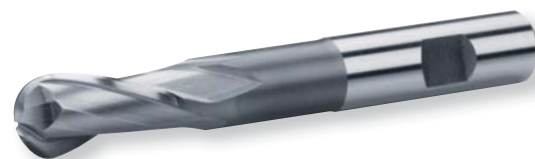
1
2
3
4
5
6
7
8



DIN 1835B

 $\lambda = 25^\circ$
 $\gamma = 10^\circ$ HSS
Co8

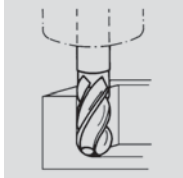
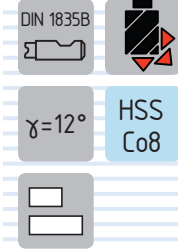
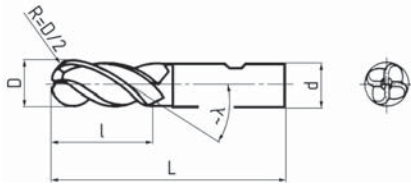
z=2



Použití / Usage / Applikation / Употребление

1 2 3 4 5 6 7 8 9 10 11 12 13

D h 10	I	L	d h 6	CODE
4	11	63	6	511418.040
5	13	68	6	511418.050
6	13	68	6	511418.060
7	16	80	10	511418.070
8	19	88	10	511418.080
9	19	88	10	511418.090
10	22	95	10	511418.100
11	22	102	12	511418.110
12	26	110	12	511418.120
13	26	110	12	511418.130
14	26	110	12	511418.140
15	26	110	12	511418.150
16	32	123	16	511418.160
18	32	123	16	511418.180
20	38	141	20	511418.200
22	38	141	20	511418.220
24	45	166	25	511418.240
25	45	166	25	511418.250
28	45	166	25	511418.280
30	45	166	25	511418.300
32	53	186	32	511418.320



Použití / Usage / Applikation / Употребление

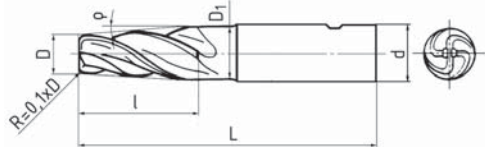
- 1 2 3 4 5 6 7 8 9 10 11 12 13

Krátké / Short / Kurz / Короткие

D k 12	l	L	d h 6	Z	~λ	CODE
4	11	55	6	4	15°	530718.040
5	13	57	6	4	15°	530718.050
6	13	57	6	4	25°	530718.060
8	19	69	10	4	25°	530718.080
10	22	72	10	4	35°	530718.100
12	26	83	12	4	35°	530718.120
16	32	92	16	4	35°	530718.160
20	38	104	20	4	35°	530718.200

Dlouhé / Long / Lang / Длинные

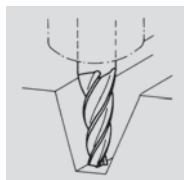
D k 12	l	L	d h 6	Z	~λ	CODE
4	19	63	6	4	15°	531718.040
5	24	68	6	4	15°	531718.050
6	24	68	6	4	25°	531718.060
8	38	88	10	4	25°	531718.080
10	45	95	10	4	35°	531718.100
12	53	110	12	4	35°	531718.120
16	63	123	16	4	35°	531718.160
20	75	141	20	4	35°	531718.200



DIN 1835B



$\lambda = 25^\circ$ HSS
 $\gamma = 12^\circ$ Co8



Použití / Usage / Applikation / Употребление

1 2 3 4 5 6 7 8 9 10 11 12 13

ρ	D js 14	D ₁ ~	l	L	d h 6	CODE
1°	5	5,7	20	73	10	580718.0105
1°	8	9,1	32	95	12	580718.0108
1°	12	13,7	50	118	16	580718.0112
1°	20	22,8	80	155	20	580718.0120
2°	5	6,4	20	74	10	580718.0205
2°	8	10,2	32	95	12	580718.0208
2°	12	15,5	50	118	16	580718.0212
2°	20	25,6	80	160	25	580718.0220
3°	5	7,1	20	74	10	580718.0305
3°	8	11,4	32	95	12	580718.0308
3°	12	17,2	50	120	20	580718.0312
3°	20	28,4	80	160	25	580718.0320
5°	5	8,5	20	74	10	580718.0505
5°	8	13,6	32	98	16	580718.0508
5°	12	20,7	50	120	20	580718.0512
5°	20	34	80	165	32	580718.0520
7°	5	9,9	20	80	12	580718.0705
7°	8	15,9	32	98	16	580718.0708
7°	12	24,3	50	130	25	580718.0712
7°	20	39,6	80	165	32	580718.0720
10°	5	12,1	20	80	12	580718.1005
10°	8	19,3	32	100	20	580718.1008
10°	12	29,6	50	130	25	580718.1012
10°	20	48,2	80	165	32	580718.1020

Příklad objednávky / Example of order / Bestellsbeispiel / Пример заказа: **580718.0105 (+ TiAlN)**